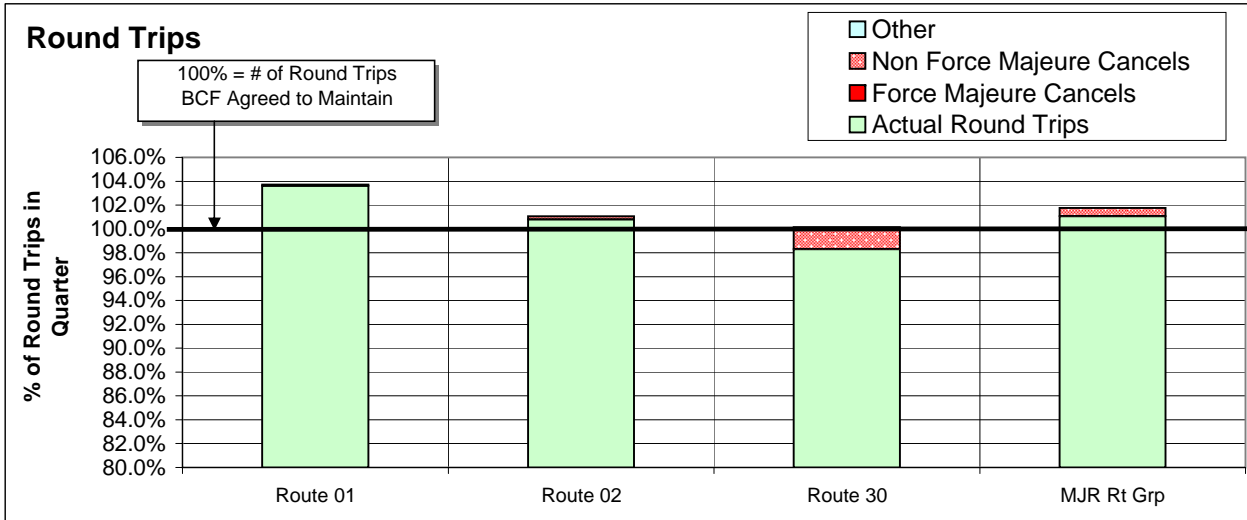
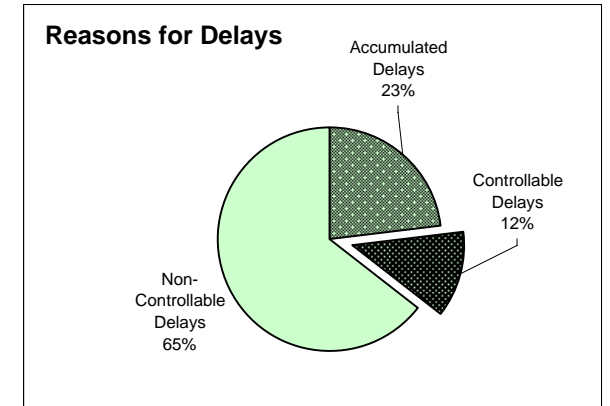


# APPENDIX 4: Round Trip Service Delivery and On Time Performance for the 3rd Quarter - 2005/06 Ending December 31, 2005

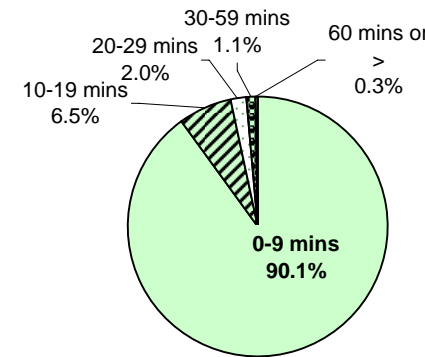
## ROUTE GROUP: Major Routes



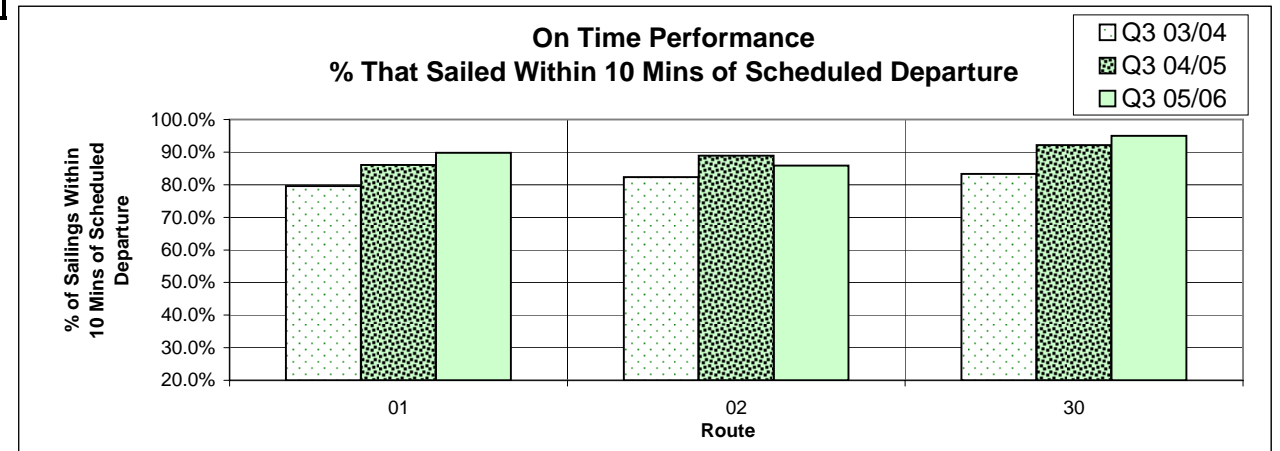
Major Routes	Major Route Description	# of Scheduled Round Trips (RT)	# of Actual RT	Net Extra RT (Short RT)	% Sailings Overloaded
Route 01	Swartz Bay-Tsawwassen	833.0	863.0	30.0	45.8%
Route 02	Horseshoe Bay-Departure Bay	745.0	751.0	6.0	17.8%
Route 30	Duke Point-Tsawwassen	708.0	696.0	-12.0	5.8%
<b>MAJOR Route Group Total</b>		<b>2,286.0</b>	<b>2,310.0</b>	<b>24.0</b>	<b>16.0%</b>



### On Time Performance 2005/06



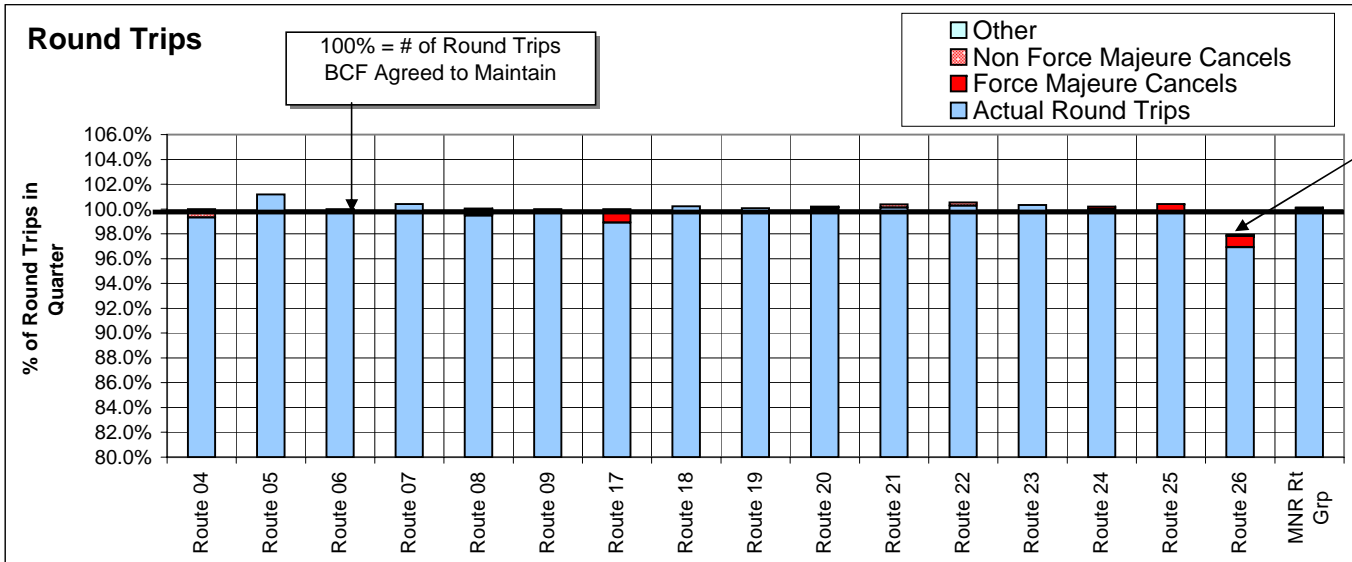
**Controllable** = Under the control of the company (loading procedure, crewing level, etc.)  
**Non-Controllable** = Out of the control of the company (bad weather, medical, etc.)  
**Accumulated** = Delays accumulated over the course of the day as a result of an earlier delay



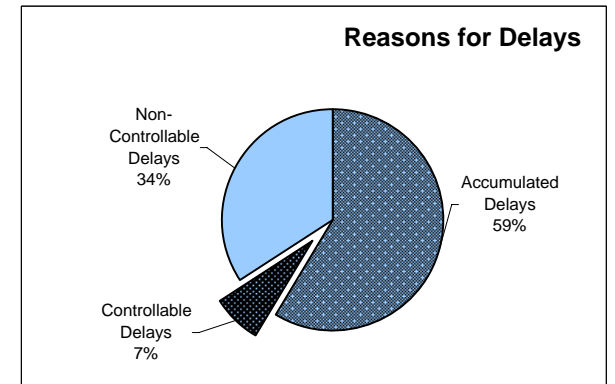
**NOTES:** (1) Sailings greater than the 100% BCF agreed to maintain are a result of traffic demand  
 (2) Force Majeure means something beyond control of the company (e.g. bad weather)

# APPENDIX 4: Round Trip Service Delivery and On Time Performance for the 3rd Quarter - 2005/06 Ending December 31, 2005

## ROUTE GROUP: Minor Routes

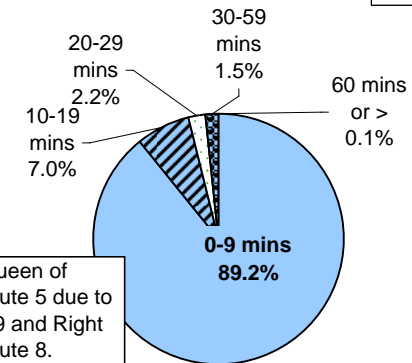


\* Route 26 - BC Ferries had a special exemption from the Commissioner for reduced service in Q3 while the Kwuna was in refit from November 9, 2005 to December 13, 2005.



**Controllable** = Under the control of the company (loading procedure, crewing level, etc.)  
**Non-Controllable** = Out of the control of the company (bad weather, medical, etc.)  
**Accumulated** = Delays accumulated over the course of the day as a result of an earlier delay

### On Time Performance 2005/06

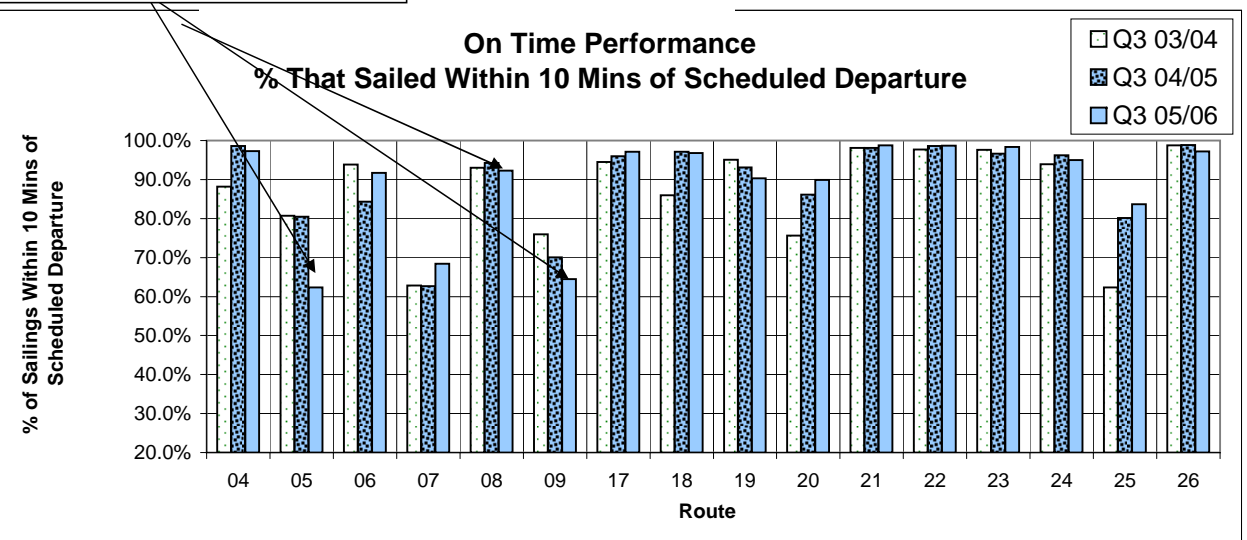


Mechanical problems on the Queen of Cumberland affected sailings on Route 5 due to transfer traffic problems on Route 9 and Right Angle Drive availability on Route 8.

Major Routes	Major Route Description	# of Scheduled Round Trips (RT)	# of Actual RT	Net Extra RT/ (Short RT)	% Sailings Overloaded
Route 04	Swartz Bay-Fulford Harbour	723.0	718.0	-5.0	5.1%
Route 05	Swartz Bay-Southern Gulf Islands	859.0	869.0	10.0	4.2%
Route 06	Crofton-Vesuvius Bay	1,270.0	1,267.0	-3.0	1.2%
Route 07	Earls Cove-Salter Bay	723.0	726.0	3.0	1.2%
Route 08	Horseshoe Bay-Bowen Island	1,401.5	1,394.0	-7.5	10.5%
Route 09	Tsawwassen-Long Harbour	184.0	184.0	0.0	14.9%
Route 17	Little River (Comox)-Powell River	367.0	363.0	-4.0	0.3%
Route 18	Westview (Powell River)-Blubber Bay (Texada)	919.0	921.0	2.0	0.7%
Route 19	Nanaimo Harbour-Descanso Bay (Gabriola)	1,445.0	1,446.0	1.0	9.8%
Route 20	Chemainus-Thetis-Kuper	1,010.0	1,009.0	-1.0	1.1%
Route 21	Buckley Bay-Denman West	1,549.0	1,551.0	2.0	1.3%
Route 22	Gravelley Bay (Denman East)-Shingle Spit (Hornby)	1,129.0	1,132.0	3.0	0.4%
Route 23	Campbell River-Quathiaski Cove (Quadra)	1,577.0	1,582.0	5.0	6.6%
Route 24	Heriot Bay (Quadra)-Whaletown (Cortes)	539.0	539.0	0.0	3.2%
Route 25	Port McNeill-Sointula-Alert Bay	998.0	996.0	-2.0	2.2%
*Route 26	Skidegate-Alliford Bay	1,103.0	1,069.0	-34.0	0.3%
<b>MINOR Route Group Total</b>		<b>15,796.5</b>	<b>15,766.0</b>	<b>-30.5</b>	<b>2.5%</b>

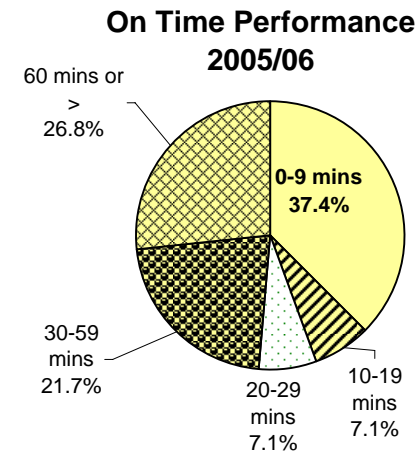
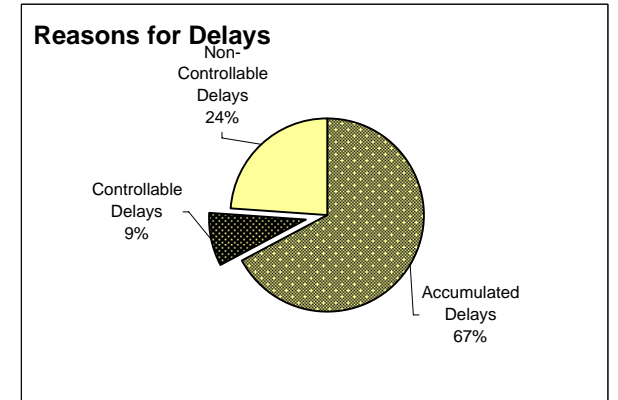
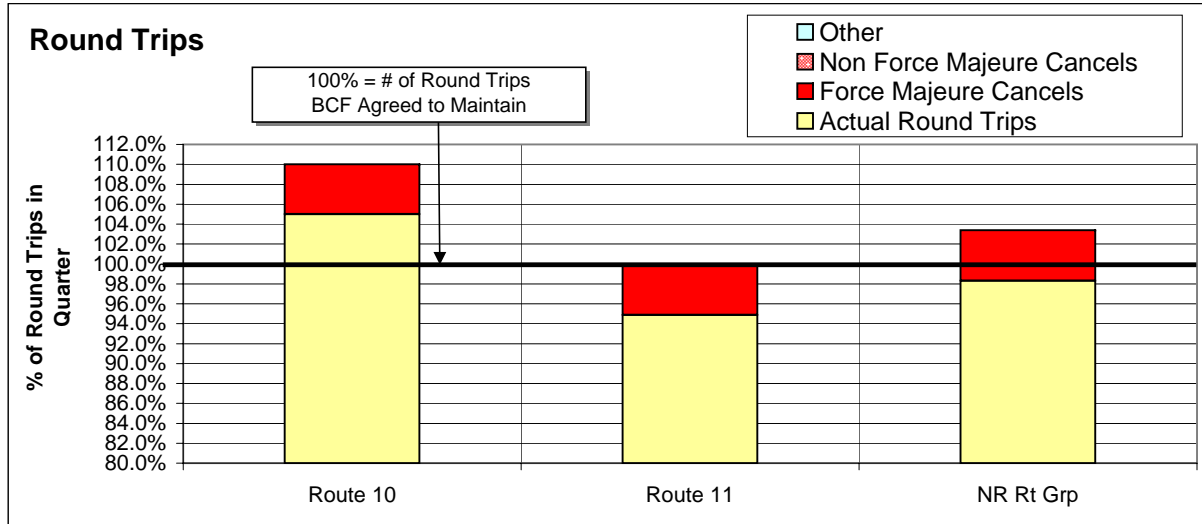
\* Route 26 - BC Ferries had a special exemption from the Commissioner for reduced service in Q3 while the Kwuna was in refit from November 9, 2005 to December 13, 2005.

### On Time Performance % That Sailed Within 10 Mins of Scheduled Departure



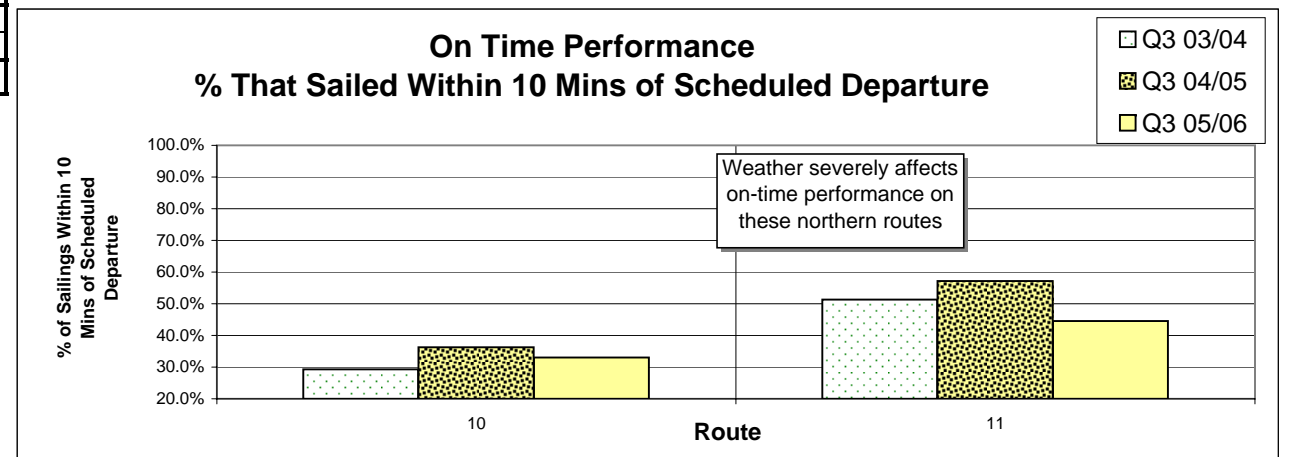
**NOTES:** (1) Sailings greater than the 100% BCF agreed to maintain are a result of traffic demand  
 (2) Force Majeure means something beyond control of the company (e.g. bad weather)

# APPENDIX 4: Round Trip Service Delivery and On Time Performance for the 3rd Quarter - 2005/06 Ending December 31, 2005



**Controllable** = Under the control of the company (loading procedure, crewing level, etc.)  
**Non-Controllable** = Out of the control of the company (bad weather, medical, etc.)  
**Accumulated** = Delays accumulated over the course of the day as a result of an earlier delay

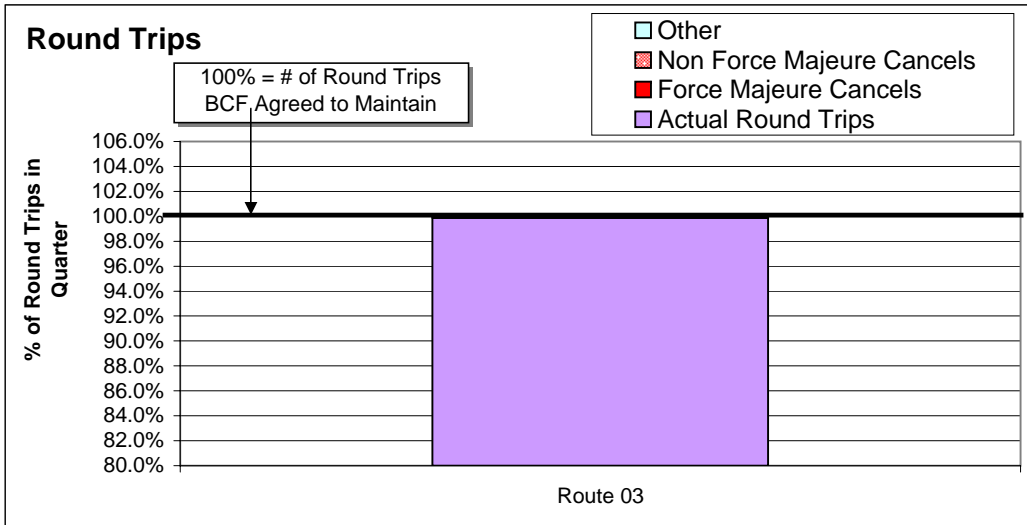
Major Routes	Major Route Description	# of Scheduled Round Trips (RT)	# of Actual RT	Net Extra RT/ (Short RT)	% Sailings Overloaded
Route 10	Port Hardy-Prince Rupert	20.0	21.0	1.0	0.0%
Route 11	Skidegate-Prince Rupert	39.0	37.0	-2.0	0.0%
<b>NORTHERN Route Group Total</b>		<b>59.0</b>	<b>58.0</b>	<b>-1.0</b>	<b>0.0%</b>



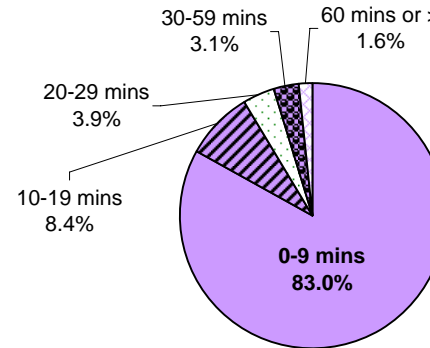
**NOTES:** (1) Sailings greater than the 100% BCF agreed to maintain are a result of traffic demand  
(2) Force Majeure means something beyond control of the company (e.g. bad weather)

# APPENDIX 4: Round Trip Service Delivery and On Time Performance for the 3rd Quarter - 2005/06 Ending December 31, 2005

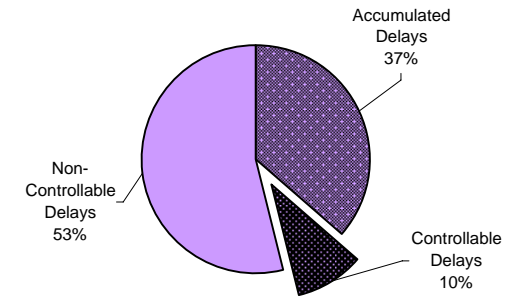
## ROUTE GROUP: Route 03



### On Time Performance 2005/06



### Reasons for Delays

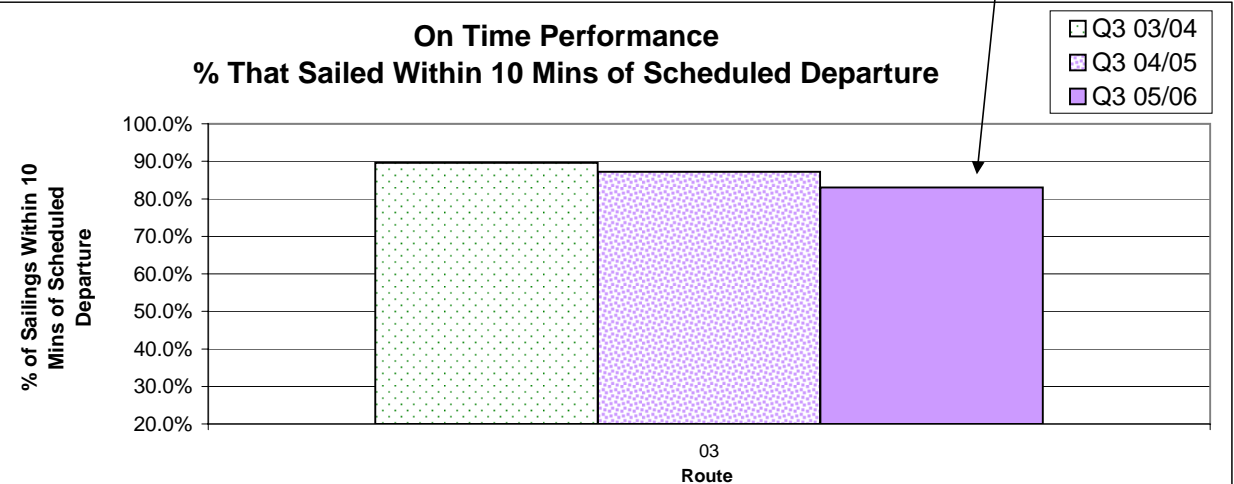


**Controllable** = Under the control of the company (loading procedure, crewing level, etc.)  
**Non-Controllable** = Out of the control of the company (bad weather, medical, etc.)  
**Accumulated** = Delays accumulated over the course of the day as a result of an earlier delay

Route 3 on time performance was affected by berth closure at Horseshoe Bay for maintenance reasons. Also due to repairs to the hydraulics on Berth #1 Langdale creating the necessity to use the articulating ramp onboard the vessel

Major Routes	Major Route Description	# of Scheduled Round Trips (RT)	# of Actual RT	Net Extra RT/ (Short RT)	% Sailings Overloaded
Route 03	Horseshoe Bay-Langdale	736.0	735.0	-1.0	6.6%

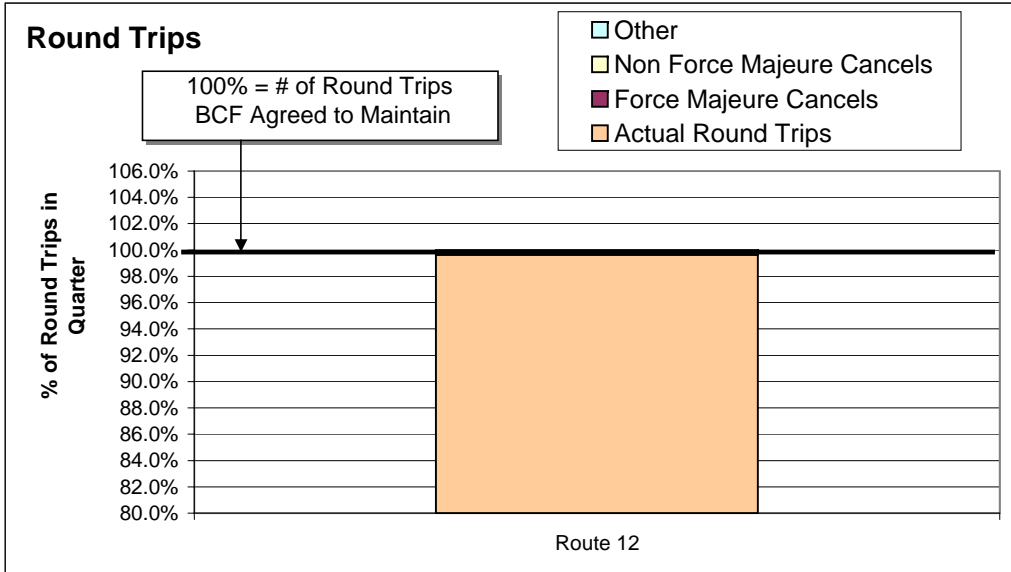
### On Time Performance % That Sailed Within 10 Mins of Scheduled Departure



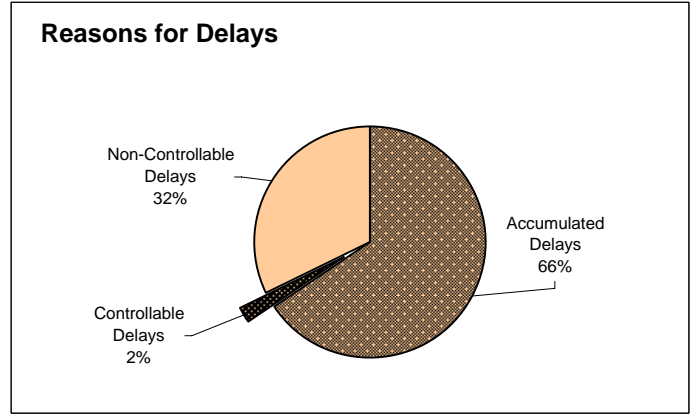
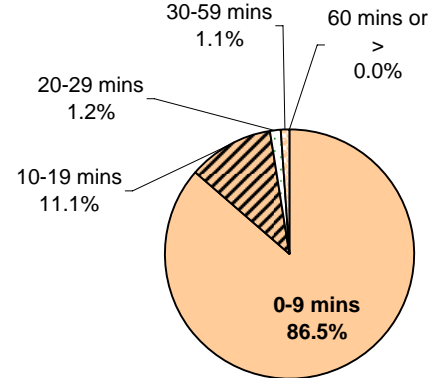
**NOTES:** (1) Sailings greater than the 100% BCF agreed to maintain are a result of traffic demand  
(2) Force Majeure means something beyond control of the company (e.g. bad weather)

# APPENDIX 4: Round Trip Service Delivery and On Time Performance for the 3rd Quarter - 2005/06 Ending December 31, 2005

## ROUTE GROUP: Route 12



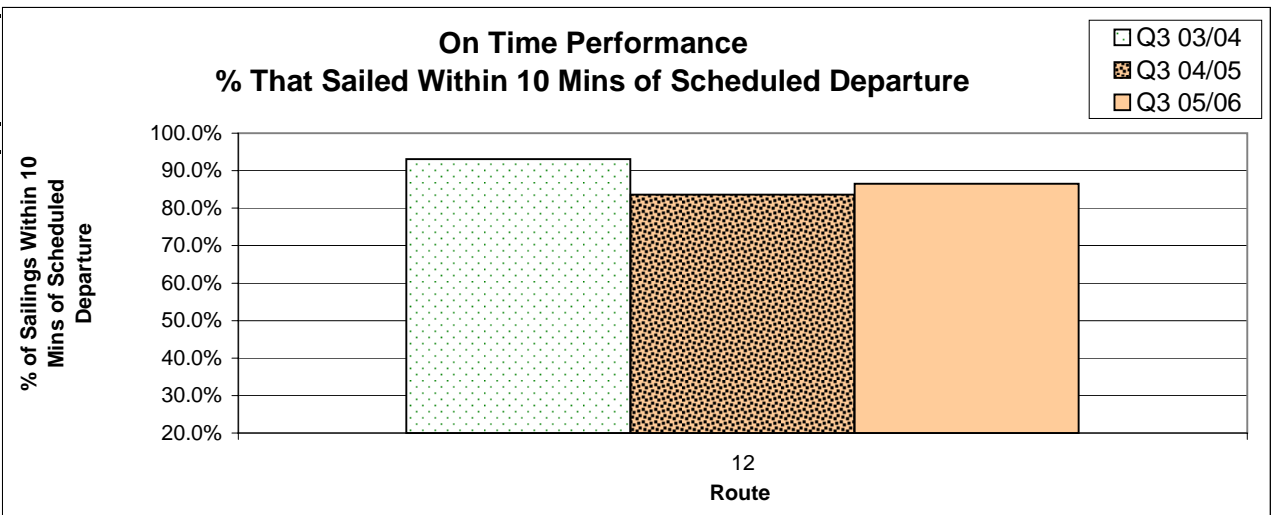
### On Time Performance 2005/06



**Controllable** = Under the control of the company (loading procedure, crewing level, etc.)  
**Non-Controllable** = Out of the control of the company (bad weather, medical, etc.)  
**Accumulated** = Delays accumulated over the course of the day as a result of an earlier delay

Major Routes	Major Route Description	# of Scheduled Round Trips (RT)	# of Actual RT	Net Extra RT/ (Short RT)	% Sailings Overloaded
Route 12	Mill Bay-Brentwood Bay	807.0	804.0	-3.0	6.0%

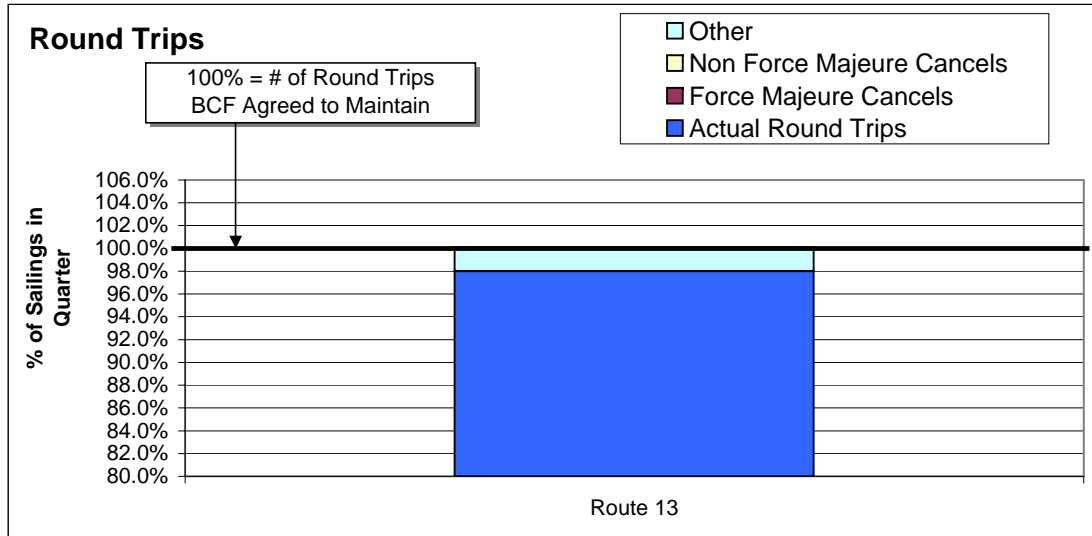
### On Time Performance % That Sailed Within 10 Mins of Scheduled Departure



**NOTES:** (1) Sailings greater than the 100% BCF agreed to maintain are a result of traffic demand  
 (2) Force Majeure means something beyond control of the company (e.g. bad weather)

## APPENDIX 4: Round Trip Service Delivery and On Time Performance for the 3rd Quarter - 2005/06 Ending December 31, 2005

### ROUTE GROUP: Route 13 - Contracted Route



Major Routes	Major Route Description	# of Scheduled Round Trips (RT)	# of Actual RT	Net Extra RT/ (Short RT)	% Sailings Overloaded
Route 13	Langdale - Keats - Gambier Island	1,042.0	1,021.0	-21.0	Pass Only

On Route 13, some sailings within the core service level are subject to passenger request. When no request is made, no sailing occurs.

### On Time Performance

On-time performance figures are not available for this route due to the nature of these trips (sailing usually run every 10 mins or less)

**NOTES:** (1) Sailings greater than the 100% BCF agreed to maintain are a result of traffic demand  
(2) Force Majeure means something beyond control of the company (e.g. bad weather)

**APPENDIX 4: Round Trip Service Delivery and On Time Performance  
for the 3rd Quarter - 2005/06  
Ending December 31, 2005**

**ROUTE GROUP: Route 40**

The 3rd quarter figures are not available for this route because Route 40 is only operational in the summer.