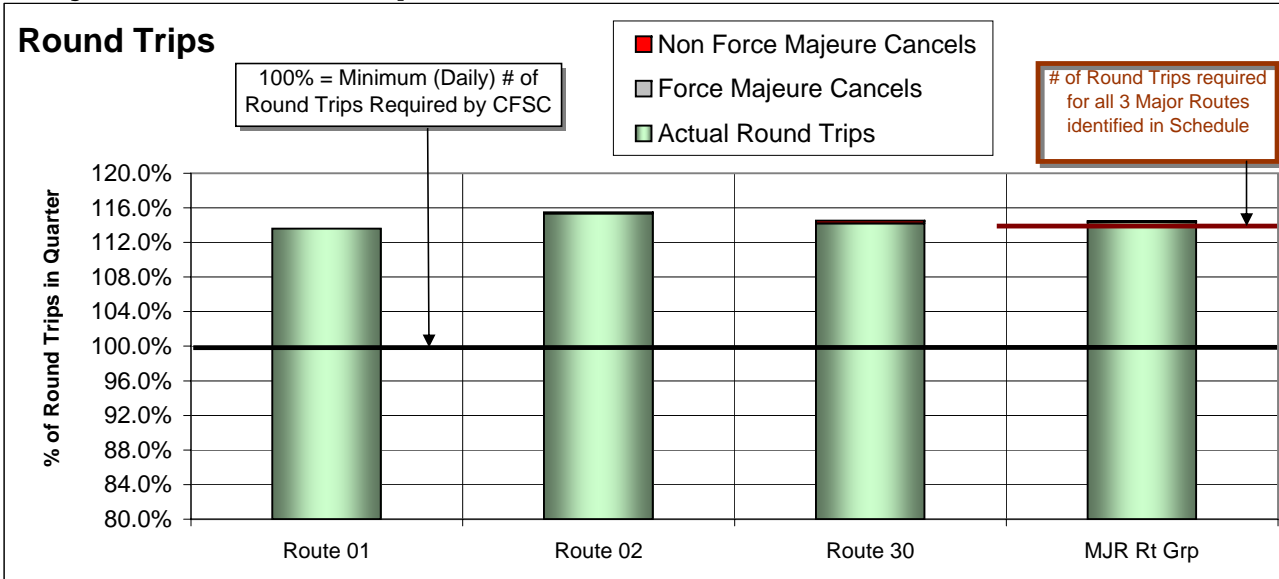
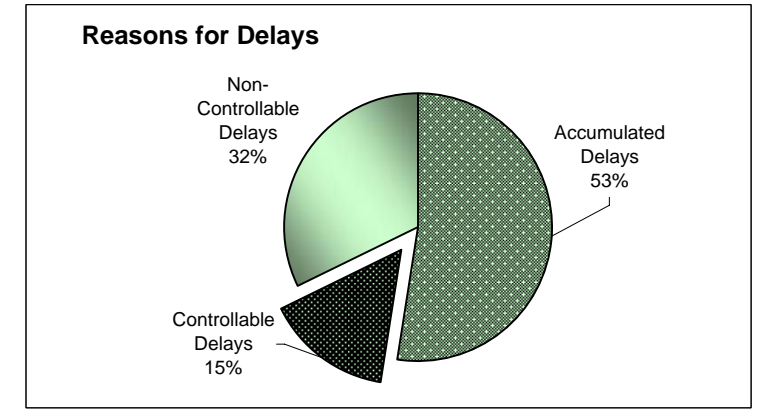


APPENDIX 4: Round Trip Service Delivery and On Time Performance for the 3rd Quarter - 2008/09 Ending December 31, 2008

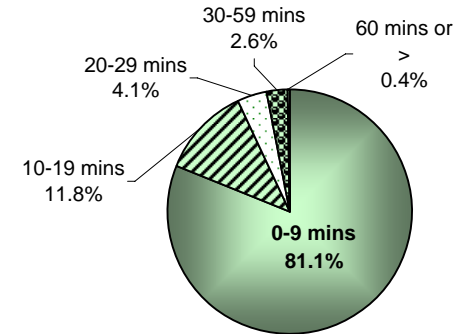
Major Routes Group



Routes	Major Route Description	# of Round Trips Required under CFSC	# of Actual RT	Net Extra RT (Short RT)	% Sailings Overloaded
Route 01	Swartz Bay-Tsawwassen	743.0	844.0	101.0	37.2%
Route 02	Horseshoe Bay-Departure Bay	646.0	745.0	99.0	20.6%
Route 30	Duke Point-Tsawwassen	592.0	676.0	84.0	13.7%
MAJOR Route Group Total		1,981.0	2,265.0	284.0	24.7%

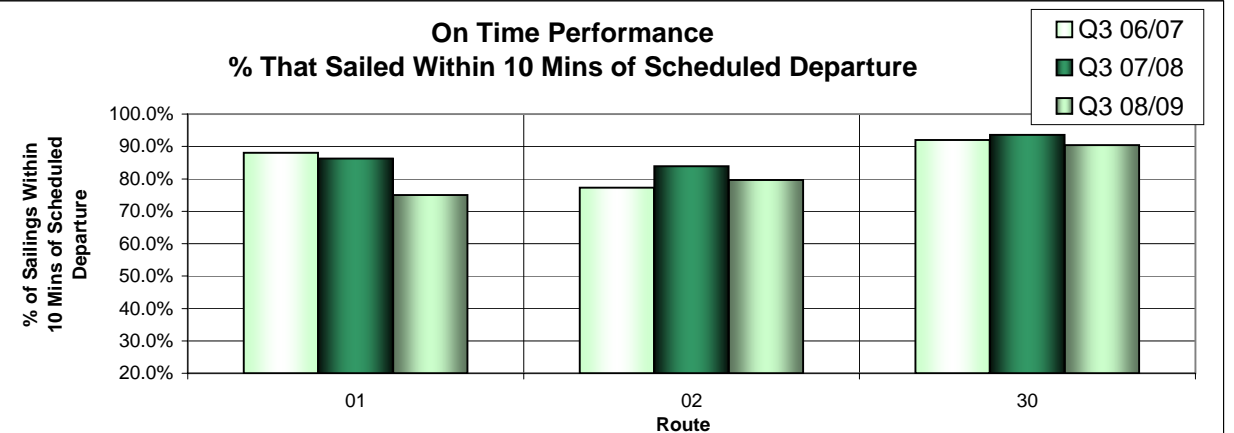


On Time Performance 2008/09



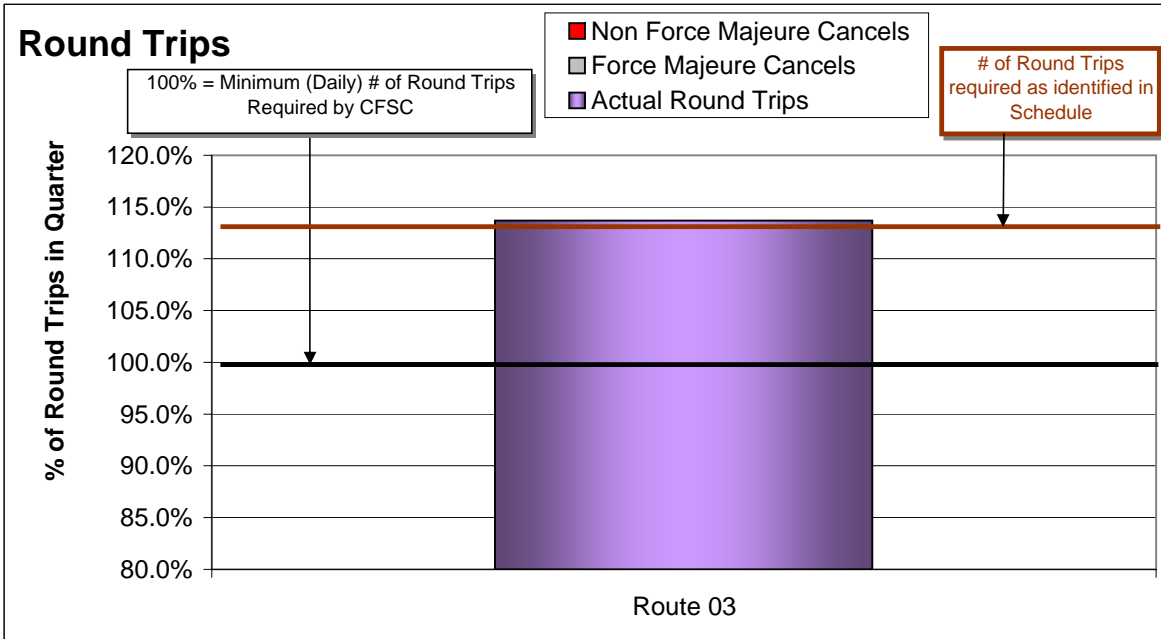
Controllable = Under the control of the company (loading procedure, crewing level, etc.)
Non-Controllable = Out of the control of the company (bad weather, medical, etc.)
Accumulated = Delays accumulated over the course of the day as a result of an earlier delay

On Time Performance % That Sailed Within 10 Mins of Scheduled Departure



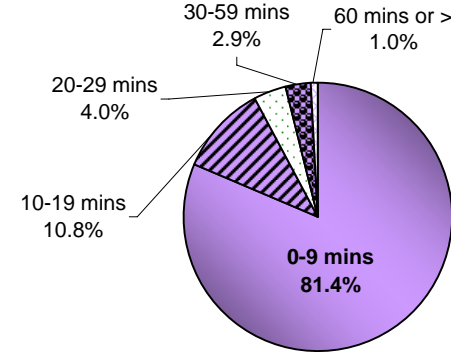
APPENDIX 4: Round Trip Service Delivery and On Time Performance for the 3rd Quarter - 2008/09 Ending December 31, 2008

Route 03 Group

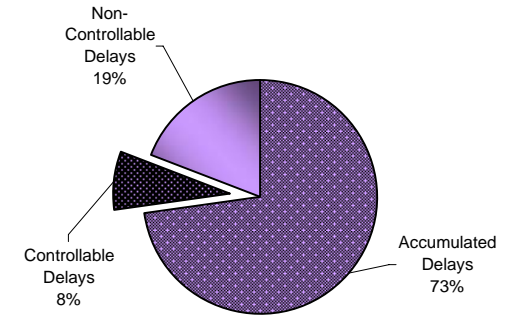


Routes	Route 3 Description	# of Round Trips Required under CFSC	# of Actual RT	Net Extra RT (Short RT)	% Sailings Overloaded
Route 03	Horseshoe Bay-Langdale	643.0	731.0	88.0	8.5%

On Time Performance 2008/09

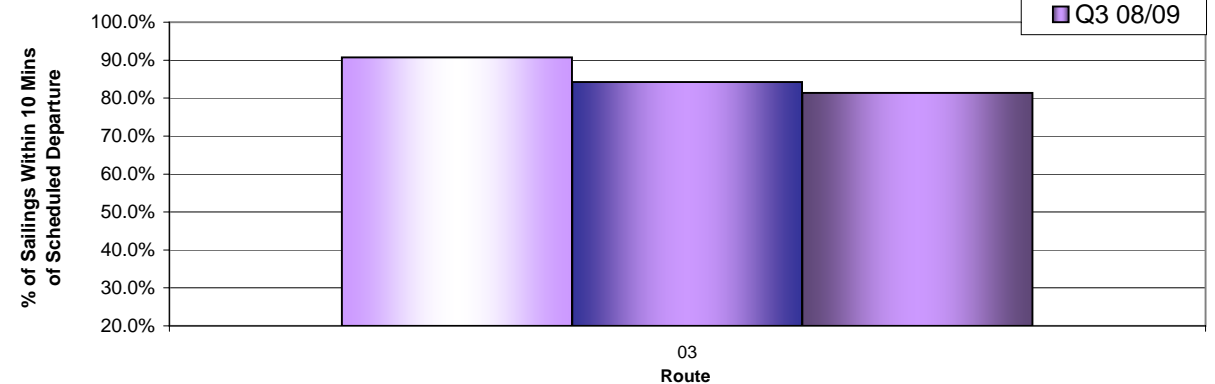


Reasons for Delays



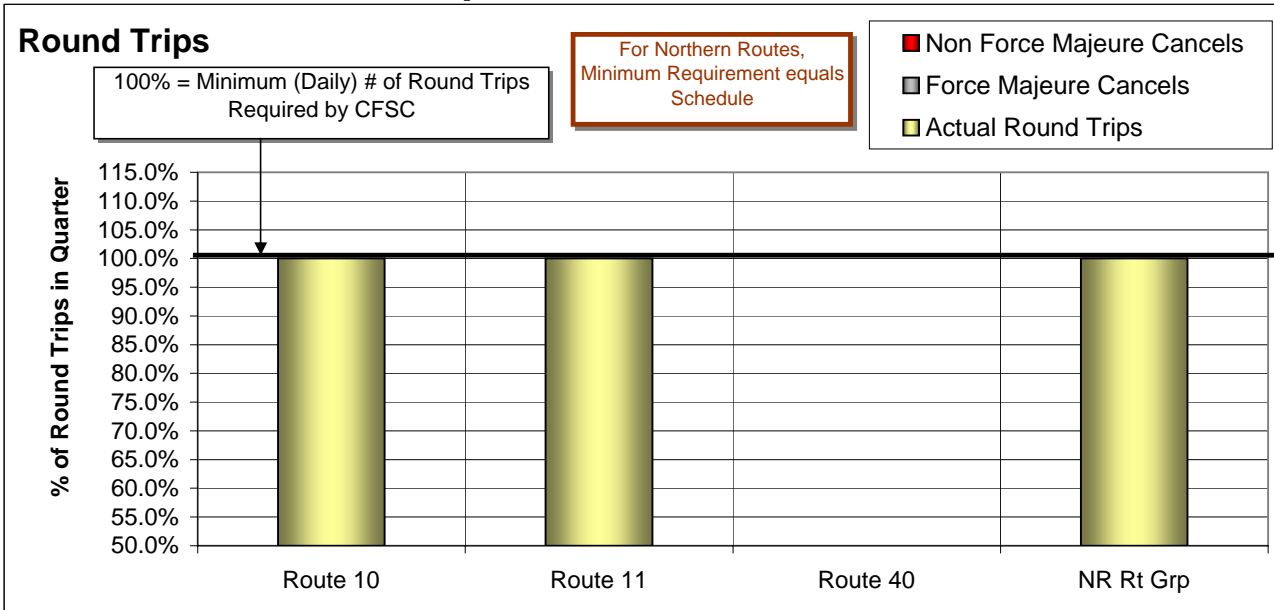
Controllable = Under the control of the company (loading procedure, crewing level, etc.)
Non-Controllable = Out of the control of the company (bad weather, medical, etc.)
Accumulated = Delays accumulated over the course of the day as a result of an earlier delay

On Time Performance % That Sailed Within 10 Mins of Scheduled Departure

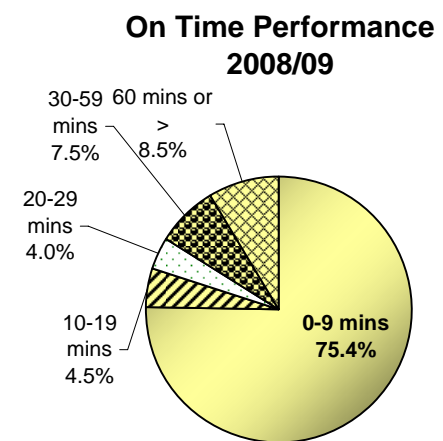
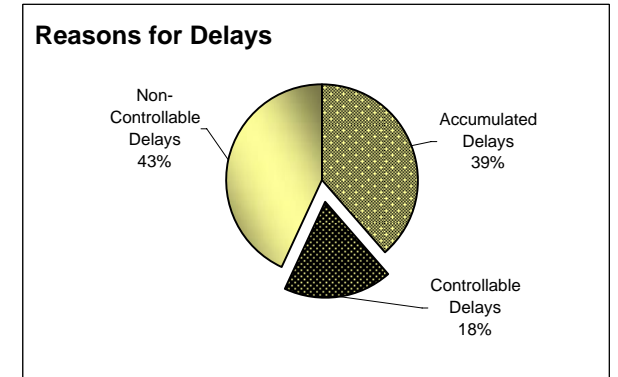


APPENDIX 4: Round Trip Service Delivery and On Time Performance for the 3rd Quarter - 2008/09 Ending December 31, 2008

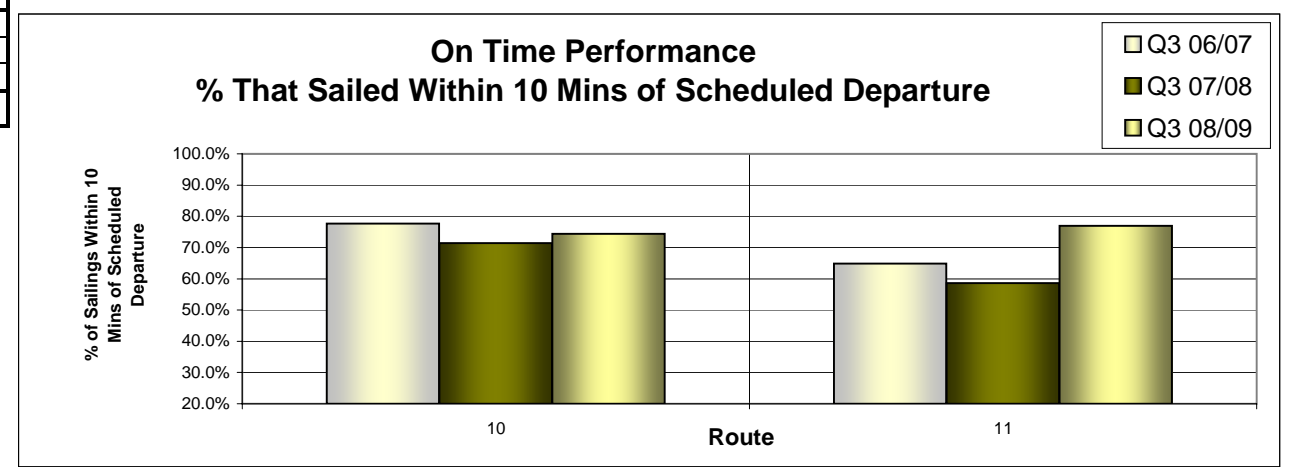
Northern Routes Group



Routes	Northern Routes Description	# of Round Trips Required under CFSC	# of Actual RT	Net Extra RT (Short RT)	% Sailings Overloaded	
Route 10	Port Hardy-Prince Rupert	19.0	19.0	0.0	0.0%	
Route 11	Skidegate-Prince Rupert	39.0	39.0	0.0	2.6%	
Route 40	Port Hardy - Mid Coast	<i>(summer service only)</i>				
NORTHERN Route Group Total		58.0	58.0	0.0	1.0%	

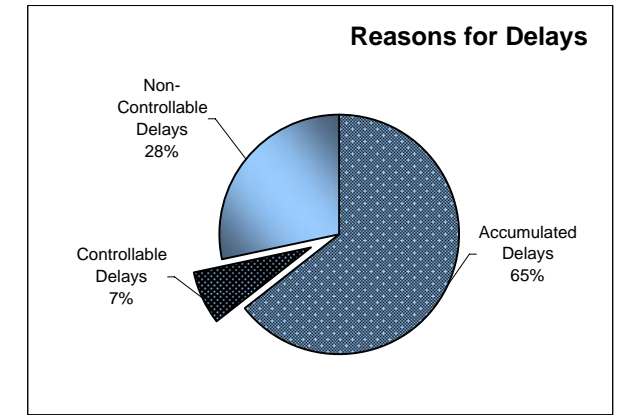
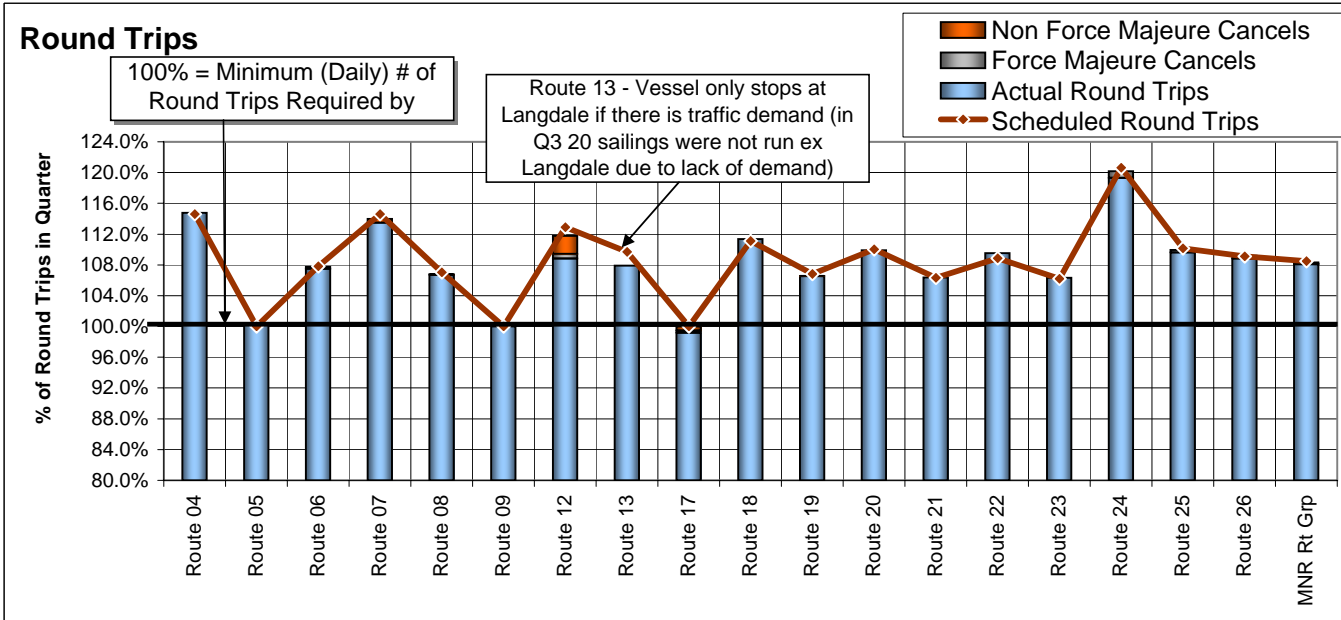


Controllable = Under the control of the company (loading procedure, crewing level, etc.)
Non-Controllable = Out of the control of the company (bad weather, medical, etc.)
Accumulated = Delays accumulated over the course of the day as a result of an earlier delay

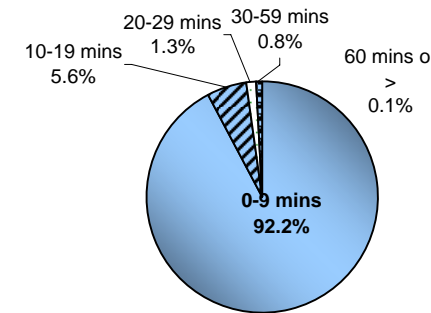


APPENDIX 4: Round Trip Service Delivery and On Time Performance for the 3rd Quarter - 2008/09 Ending December 31, 2008

Minor Routes Group



On Time Performance 2008/09



Controllable = Under the control of the company (loading procedure, crewing level, etc.)
Non-Controllable = Out of the control of the company (bad weather, medical, etc.)
Accumulated = Delays accumulated over the course of the day as a result of an earlier delay

Routes	Minor Routes Description	# of Round Trips Required under CFSC	# of Actual RT	Net Extra RT (Short RT)	% Sailings Overloaded
Route 04	Swartz Bay-Fulford Harbour	630.0	723.0	93.0	3.7%
Route 05	Swartz Bay-Southern Gulf Islands	877.0	879.0	2.0	2.9%
Route 06	Crofton-Vesuvius Bay	1,177.0	1,265.0	88.0	1.1%
Route 07	Earls Cove-Salter Bay	630.0	715.0	85.0	1.5%
Route 08	Horseshoe Bay-Bowen Island	1,310.5	1,398.5	88.0	5.4%
Route 09	Tsawwassen-Long Harbour	184.0	184.0	0.0	1.4%
Route 12	Mill Bay-Brentwood Bay	714.0	777.0	63.0	n/a
Route 13	Langdale - Keats - Gambier Island	948.0	1,023.0	75.0	6.7%
Route 17	Little River (Comox)-Powell River	367.0	364.0	-3.0	0.0%
Route 18	Westview (Powell River)-Blubber Bay (Texada)	827.0	921.0	94.0	0.2%
Route 19	Nanaimo Harbour-Descanso Bay (Gabriola)	1,351.0	1,439.0	88.0	4.4%
Route 20	Chemainus-Thetis-Kuper	918.0	1,009.0	91.0	1.2%
Route 21	Buckley Bay-Denman West	1,457.0	1,550.0	93.0	0.9%
Route 22	Gravelley Bay (Denman East)-Shingle Spit (Hornby)	1,037.0	1,136.0	99.0	0.4%
Route 23	Campbell River-Quathiaski Cove (Quadra)	1,483.0	1,577.0	94.0	2.3%
Route 24	Heriot Bay (Quadra)-Whaletown (Cortes)	446.0	532.0	86.0	3.6%
Route 25	Port McNeill-Sointula-Alert Bay	906.0	993.0	87.0	1.8%
*Route 26	Skidegate-Alliford Bay	1,011.0	1,100.0	89.0	0.3%
MINOR Route Group Total		16,273.5	17,585.5	1,312.0	2.3%

