

Appendix 1: Operations Summary Report for the Quarter Ended June 30, 2009

		<i>A</i>		<i>B</i>		<i>C</i>		<i>D</i>		<i>E</i>		<i>F</i>		<i>G</i>	
Route Group	Route	Actual Round Trips	Capacity Provided (AEQ's)	AEQ's Carried QTR 1 2010	Capacity Utilization (C / B)	AEQ's Carried QTR 1 2009	AEQ Growth (C - E)	AEQ Tariff Revenue QTR 1 2010							
1	1	1,011.0	772,270	570,076	73.8%	575,524	(5,448)	\$ 24,175,842							
1	2	760.0	555,808	359,232	64.6%	342,378	16,854	14,556,302							
1	30	700.0	451,262	214,807	47.6%	253,407	(38,600)	10,643,942							
Major Routes		2,471.0	1,779,340	1,144,115	64.3%	1,171,309	(27,194)	49,376,086							
2		738.0	533,481	320,784	60.1%	321,086	(302)	5,782,699							
3	10	35.5	10,313	3,914	38.0%	4,174	(260)	1,058,015							
3	11	41.0	7,810	4,785	61.3%	5,499	(714)	692,951							
3	40	9.5	2,185	595	27.2%	590	5	143,834							
Northern Routes		86.0	20,308	9,294	45.8%	10,263	(969)	1,894,800							
4	4	761.0	125,224	84,027	67.1%	89,633	(5,606)	794,374							
4	5	870.0	179,142	75,298	42.0%	74,477	821	807,776							
4	6	1,258.0	176,120	73,466	41.7%	73,296	170	742,793							
4	7	713.0	178,250	49,531	27.8%	49,337	194	927,497							
4	8	1,388.5	242,420	132,352	54.6%	139,934	(7,582)	1,240,993							
4	9	178.0	82,560	42,702	51.7%	42,428	274	1,567,950							
4	12	806.0	25,792	20,461	79.3%	21,277	(816)	213,994							
4	13	1,046.0	<i>Pass. Only</i>	<i>Pass. Only</i>	<i>Pass. Only</i>	<i>Pass. Only</i>	<i>Pass. Only</i>	36							
4	17	364.0	128,303	45,903	35.8%	47,609	(1,706)	1,509,694							
4	18	905.0	77,480	23,737	30.6%	26,701	(2,964)	161,159							
4	19	1,427.0	199,780	100,637	50.4%	104,601	(3,964)	718,430							
4	20	994.0	69,376	23,259	33.5%	21,897	1,362	166,235							
4	21	1,560.0	155,950	65,787	42.2%	63,810	1,977	408,800							
4	22	1,155.0	69,300	29,346	42.3%	28,654	692	183,737							
4	23	1,568.0	219,520	106,182	48.4%	107,353	(1,171)	733,696							
4	24	534.0	32,040	16,633	51.9%	15,522	1,111	130,858							
4	25	990.0	59,400	25,632	43.2%	24,819	813	220,402							
4	26	1,100.0	58,344	15,090	25.9%	17,441	(2,351)	111,718							
Minor Routes		17,617.5	2,079,001	930,043	44.7%	948,789	(18,746)	10,640,142							
Total		20,912.5	4,412,130	2,404,236	54.5%	2,451,447	(47,211)	67,693,727							

Note 1) Revenue arises from bike traffic and freight.

Appendix 1: Operations Summary Report for the Quarter Ended June 30, 2009

Route Group	Route	H	I	J	K	% Sailings Departing Within 10 Min.		
		Passengers QTR 1 2010	Passengers QTR 1 2009	Passenger Growth (H - I)	Passenger Tariff Revenue QTR 1 2010	QTR 1 2008	QTR 1 2009	QTR 1 2010
1	1	1,502,357	1,520,091	(17,734)	\$ 15,676,477	90.6%	89.8%	89.3%
1	2	885,371	813,771	71,600	9,214,118	60.4%	79.9%	75.1%
1	30	356,430	434,252	(77,822)	3,664,204	88.5%	88.8%	94.8%
Major Routes		2,744,158	2,768,114	(23,956)	28,554,799	80.8%	86.5%	86.5%
2	3	661,551	648,527	13,024	3,111,883	71.4%	73.3%	71.6%
3	10	10,077	11,403	(1,326)	1,227,568	61.8%	79.9%	78.3%
3	11	8,730	9,349	(619)	254,532	34.8%	58.3%	85.4%
3	40	1,296	1,304	(8)	129,718	61.9%	80.0%	83.3%
Northern Routes		20,103	22,056	(1,953)	1,611,818	54.5%	73.6%	81.1%
4	4	165,757	168,845	(3,088)	653,355	95.5%	96.8%	76.8%
4	5	134,104	130,085	4,019	462,211	72.2%	66.0%	61.2%
4	6	138,001	137,970	31	434,736	88.0%	73.8%	74.0%
4	7	87,573	85,975	1,598	406,342	65.3%	69.8%	90.3%
4	8	305,157	312,586	(7,429)	811,718	72.9%	85.1%	83.0%
4	9	118,145	113,224	4,921	1,106,453	77.3%	68.8%	71.0%
4	12	40,158	40,989	(831)	176,436	96.1%	86.6%	84.9%
4	13	13,712	13,718	(6)	43,384	n/a	99.9%	98.7%
4	17	98,061	99,403	(1,342)	940,551	88.0%	94.0%	88.9%
4	18	47,515	53,414	(5,899)	114,731	94.0%	92.3%	91.0%
4	19	215,600	215,193	407	499,070	83.6%	74.6%	83.8%
4	20	72,861	67,565	5,296	149,596	72.2%	72.7%	79.2%
4	21	126,598	121,607	4,991	288,698	95.8%	99.7%	99.6%
4	22	56,209	53,893	2,316	133,255	95.9%	97.3%	99.0%
4	23	223,720	230,004	(6,284)	505,864	97.7%	97.7%	98.4%
4	24	27,855	26,658	1,197	85,053	94.7%	94.2%	91.9%
4	25	66,046	67,852	(1,806)	186,166	74.9%	63.8%	83.5%
4	26	28,919	33,318	(4,399)	72,703	98.5%	99.1%	99.2%
Minor Routes		1,965,991	1,972,299	(6,308)	7,070,322	85.4%	85.3%	86.3%
Total		5,391,803	5,410,996	(19,193)	40,348,822	84.2%	85.0%	85.8%

Appendix 3a - CANCELLED ROUND TRIPS BY ROUTE AND ROUTE GROUP

PERFORMANCE AGAINST MINIMUM (DAILY) CORE SERVICE LEVELS

2009/10 Quarter Ended June 30, 2009				Cancellations of Minimum Required Round Trips for Reasons Specified in Schedule A, 2(a) of the Coastal Ferry Services Contract												Cancellations of Minimum Required Round Trips for Other Reasons			Total Cancels	% of Minimum Required Round Trips Cancelled	
Route Group (RG)	Terminal 1	Terminal 2	Major Incident	Weather	Emerg. Response	Medical Emerg.	Regulatory Issue	Terminal / Dock Mech. Failure	Terminal / Dock Maint.	Vessel Maint.	Vessel Mech. Failure	Vessel Sink / Ground	Fire	Labour Dispute	Allowed Cancels	Community Event	Traffic	Other Cancels			
	Route 01	Swartz Bay	Tsawwassen												0.0			0.0	0.0	0.00%	
	Route 02	Horseshoe Bay	Departure Bay												0.0			0.0	0.0	0.00%	
	Route 30	Duke Point	Tsawwassen								1				1.0			0.0	1.0	0.16%	
RG 1 - Major Routes				0	0	0	0	0	0	0	1	0	0	0	1.0	0	0	0.0	1.0	0.05%	
	Route 03	Langdale	Horseshoe Bay								1				1.0			0.0	1.0	0.16%	
RG 2 - Route 3				0	0	0	0	0	0	0	1	0	0	0	1.0	0	0	0.0	1.0	0.16%	
	Route 10	Port Hardy	Prince Rupert								1				1.0			0.0	1.0	2.74%	
	Route 11	Skidegate	Prince Rupert								1				1.0			0.0	1.0	2.38%	
	Route 40	Port Hardy	Mid-coast												0.0			0.0	0.0	n/a	
RG 3 - Northern Routes				0	0	0	0	0	0	0	2	0	0	0	2.0	0	0	0.0	2.0	2.27%	
	Route 04	Fulford Harbour	Swartz Bay												0.0			0.0	0.0	0.00%	
	Route 05	Swartz Bay	Four SGIs				1								1.0		1	1.0	2.0	0.23%	
	Route 06	Crofton	Vesuvius Bay												0.0			0.0	0.0	0.00%	
	Route 07	Earls Cove	Saltery Bay				1								1.0			0.0	1.0	0.16%	
	Route 08	Horseshoe Bay	Bowen Island												0.0			0.0	0.0	0.00%	
	Route 09	Tsawwassen	Long Harbour				4								4.0			0.0	4.0	2.20%	
	Route 12	Mill Bay	Brentwood Bay												0.0			0.0	0.0	0.00%	
	Route 13	Langdale	Gambier/Keats												0.0			0.0	0.0	0.00%	
	Route 17	Little River	Powell River												0.0			0.0	0.0	0.00%	
	Route 18	Texada	Powell River	3											3.0			0.0	3.0	0.37%	
	Route 19	Nanaimo Harbour	Gabriola Island				1								1.0			0.0	1.0	0.07%	
	Route 20	Chemainus	Thetis Island				2								2.0			0.0	2.0	0.22%	
	Route 21	Buckley Bay	Denman West												0.0			0.0	0.0	0.00%	
	Route 22	Denman East	Hornby Island												0.0			0.0	0.0	0.00%	
	Route 23	Campbell River	Quadra Island												0.0			0.0	0.0	0.00%	
	Route 24	Quadra Island	Cortes Island												0.0			0.0	0.0	0.00%	
	Route 25	Port McNeill	Alert Bay												0.0			0.0	0.0	0.00%	
	Route 26	Skidegate	Alliford Bay												0.0			0.0	0.0	0.00%	
RG 4 - Minor Routes				3	0	0	0	9	0	0	0	0	0	0	12.0	0	1	1.0	13.0	0.08%	
TOTAL				3.0	0.0	0.0	0.0	9.0	0.0	0.0	0.0	4.0	0.0	0.0	0.0	16.0	0.0	1.0	1.0	17.0	0.09%

% of Minimum Required Round Trips Cancelled

0.02% 0.00% 0.00% 0.00% 0.05% 0.00% 0.00% 0.00% 0.00% 0.02% 0.00% 0.00% 0.00% 0.08% 0.00% 0.01% 0.01% 0.09%

Appendix 3b - CANCELLED & EXTRA ROUND TRIPS BY ROUTE AND ROUTE GROUP

2009/10 Quarter Ended June 30, 2009			
Route Group (RG)	Terminal 1	Terminal 2	
	Route 01	Swartz Bay	Tsawwassen
	Route 02	Horseshoe Bay	Departure Bay
	Route 30	Duke Point	Tsawwassen
RG 1 - Major Routes			
	Route 03	Langdale	Horseshoe Bay
RG 2 - Route 3			
	Route 10	Port Hardy	Prince Rupert
	Route 11	Skidegate	Prince Rupert
	Route 40	Port Hardy	Mid-coast
RG 3 - Northern Routes			
	Route 04	Fulford Harbour	Swartz Bay
	Route 05	Swartz Bay	Four SGIs
	Route 06	Crofton	Vesuvius Bay
	Route 07	Earls Cove	Saltery Bay
	Route 08	Horseshoe Bay	Bowen Island
	Route 09	Tsawwassen	Long Harbour
	Route 12	Mill Bay	Brentwood Bay
	Route 13	Langdale	Gambier/Keats
	Route 17	Little River	Powell River
	Route 18	Texada	Powell River
	Route 19	Nanaimo Harbour	Gabriola Island
	Route 20	Chemainus	Thetis Island
	Route 21	Buckley Bay	Denman West
	Route 22	Denman East	Hornby Island
	Route 23	Campbell River	Quadra Island
	Route 24	Quadra Island	Cortes Island
	Route 25	Port McNeill	Alert Bay
	Route 26	Skidegate	Alliford Bay
RG 4 - Minor Routes			
TOTAL			

Performance Against Minimum (Daily) Core Service Levels			
1st Quarter			
Actual Round Trips	Minimum Required Round Trips	Variance (Actual to Minimum)	Cancellations of Minimum Required Round Trips
1,011.0	906.0	105.0	0.0
760.0	643.0	117.0	0.0
700.0	611.0	89.0	1.0
2,471.0	2,160.0	311.0	1.0
738.0	637.0	101.0	1.0
738.0	637.0	101.0	1.0
35.5	36.5	-1.0	1.0
41.0	42.0	-1.0	1.0
9.5	9.5	0.0	0.0
86.0	88.0	-2.0	2.0
761.0	624.0	137.0	0.0
870.0	868.0	2.0	2.0
1,258.0	1,170.0	88.0	0.0
713.0	624.0	89.0	1.0
1,388.5	1,298.5	90.0	0.0
178.0	182.0	-4.0	4.0
806.0	715.0	91.0	0.0
1,046.0	939.0	107.0	0.0
364.0	364.0	0.0	0.0
905.0	819.0	86.0	3.0
1,427.0	1,339.0	88.0	1.0
994.0	910.0	84.0	2.0
1,560.0	1,443.0	117.0	0.0
1,155.0	1,027.0	128.0	0.0
1,568.0	1,469.0	99.0	0.0
534.0	442.0	92.0	0.0
990.0	897.0	93.0	0.0
1,100.0	1,001.0	99.0	0.0
17,617.5	16,131.5	1,486.0	13.0
20,912.5	19,016.5	1,896.0	17.0

Performance Against Estimated Schedule						
1st Quarter					Fiscal YTD	
Actual Round Trips	Round Trips Per Estimated Schedule	Variance (Actual to Estimated Schedule)	Cancelled Round Trips from Estimated Schedule	Total Extra / Short Round Trips	Actual Round Trips	Variance (Actual to Estimated Schedule)
1,011.0	997.0	14.0	0.0	14.0	1,011.0	14.0
760.0	734.0	26.0	0.0	26.0	760.0	26.0
700.0	702.0	-2.0	2.0	0.0	700.0	-2.0
2,471.0	2,433.0	38.0	2.0	40.0	2,471.0	38.0
738.0	728.0	10.0	3.0	13.0	738.0	10.0
738.0	728.0	10.0	3.0	13.0	738.0	10.0
35.5	36.5	-1.0	1.0	0.0	35.5	-1.0
41.0	42.0	-1.0	1.0	0.0	41.0	-1.0
9.5	9.5	0.0	0.0	0.0	9.5	0.0
86.0	88.0	-2.0	2.0	0.0	86.0	-2.0
761.0	715.0	46.0	0.0	46.0	761.0	46.0
870.0	868.0	2.0	2.0	4.0	870.0	2.0
1,258.0	1,261.0	-3.0	3.0	0.0	1,258.0	-3.0
713.0	715.0	-2.0	2.0	0.0	713.0	-2.0
1,388.5	1,389.5	-1.0	1.0	0.0	1,388.5	-1.0
178.0	182.0	-4.0	4.0	0.0	178.0	-4.0
806.0	806.0	0.0	0.0	0.0	806.0	0.0
1,046.0	1,030.0	16.0	0.0	16.0	1,046.0	16.0
364.0	364.0	0.0	0.0	0.0	364.0	0.0
905.0	910.0	-5.0	5.0	0.0	905.0	-5.0
1,427.0	1,430.0	-3.0	3.0	0.0	1,427.0	-3.0
994.0	1,001.0	-7.0	7.0	0.0	994.0	-7.0
1,560.0	1,534.0	26.0	0.0	26.0	1,560.0	26.0
1,155.0	1,118.0	37.0	0.0	37.0	1,155.0	37.0
1,568.0	1,560.0	8.0	0.0	8.0	1,568.0	8.0
534.0	533.0	1.0	0.0	1.0	534.0	1.0
990.0	988.0	2.0	0.0	2.0	990.0	2.0
1,100.0	1,092.0	8.0	0.0	8.0	1,100.0	8.0
17,617.5	17,496.5	121.0	27.0	148.0	17,617.5	121.0
20,912.5	20,745.5	167.0	34.0	201.0	20,912.5	167.0

Appendix 3c - CANCELLED ROUND TRIPS BY ROUTE AND ROUTE GROUP (by Days)

(For Cancellations of Minimum Required Round Trips for Reasons Specified in Schedule A. 2(a) of the Coastal Ferry Services Contract)

2009/10 Quarter Ended June 30, 2009				Performance Against Minimum (Daily) Core Service Levels	
Route Group (RG)		Terminal 1	Terminal 2	Calendar Year 2009	Fiscal Year 2009/10
				Cumulative Days When Round Trips Missed <i>Allowed 30 Days Per Route</i>	Highest Consecutive Days when Round Trips Missed <i>Allowed 20 Days per Route</i>
RG 1 - Major Routes	Route 01	Swartz Bay	Tsawwassen	0.0	
	Route 02	Horseshoe Bay	Departure Bay	1.0	
	Route 30	Duke Point	Tsawwassen	1.0	1.0
RG 2 - Route 3	Route 03	Langdale	Horseshoe Bay	1.0	1.0
RG 3 - Northern Routes	Route 10	Port Hardy	Prince Rupert	1.0	1.0
	Route 11	Skidegate	Prince Rupert	1.0	1.0
	Route 40	Port Hardy	Mid-coast	0.0	
RG 4 - Minor Routes	Route 04	Fulford Harbour	Swartz Bay	0.0	
	Route 05	Swartz Bay	Four SGIs	1.0	1.0
	Route 06	Crofton	Vesuvius Bay	0.0	
	Route 07	Earls Cove	Saltery Bay	1.0	1.0
	Route 08	Horseshoe Bay	Bowen Island	0.0	
	Route 09	Tsawwassen	Long Harbour	2.0	2.0
	Route 12	Mill Bay	Brentwood Bay	0.0	
	Route 13	Langdale	Gambier/Keats	0.0	
	Route 17	Little River	Powell River	0.0	
	Route 18	Texada	Powell River	1.0	1.0
	Route 19	Nanaimo Harbour	Gabriola Island	1.0	1.0
	Route 20	Chemainus	Thetis Island	2.0	1.0
	Route 21	Buckley Bay	Denman West	1.0	
	Route 22	Denman East	Hornby Island	1.0	
	Route 23	Campbell River	Quadra Island	1.0	
	Route 24	Quadra Island	Cortes Island	1.0	
Route 25	Port McNeill	Alert Bay	0.0		
Route 26	Skidegate	Alliford Bay	1.0		

Note:

(1) The Coastal Ferry Services Contract requires reporting to Calendar Year for Cumulative Days and to Fiscal Year for Consecutive Days

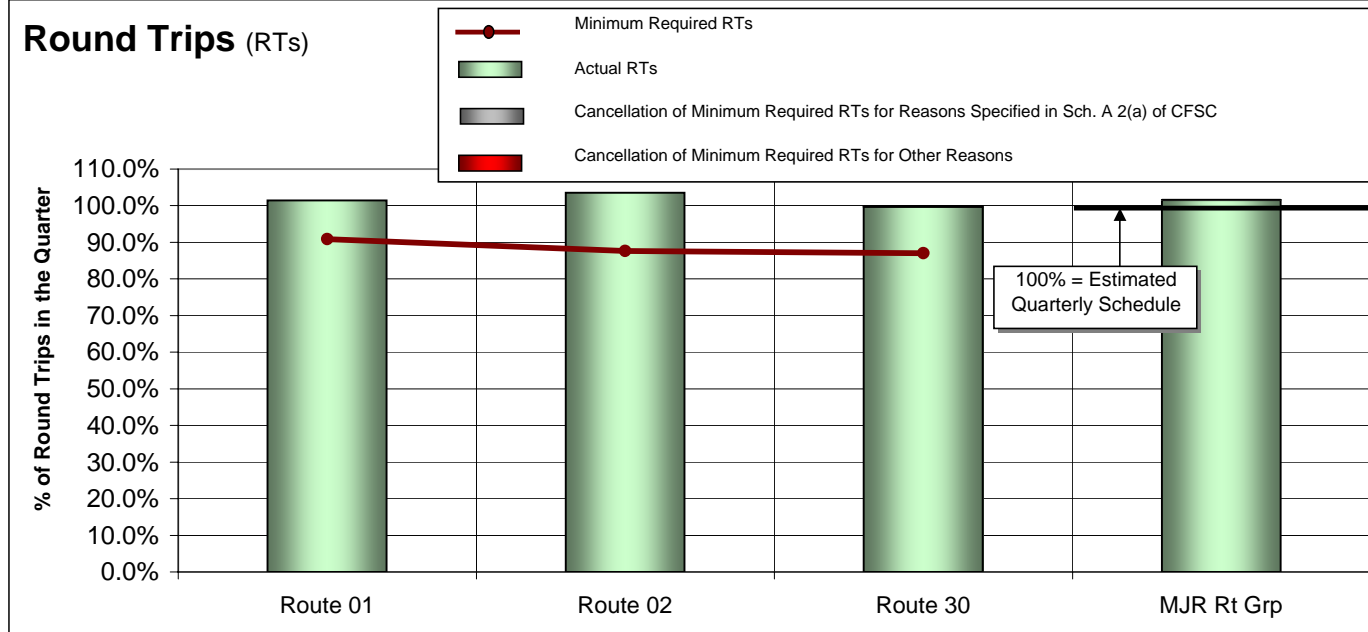
Appendix 3d - TEMPORARY SERVICE DISRUPTION - For the Quarter Ended June 30, 2009 (for disallowed reasons)



Route	Vessel	Cancel Not Allowed (See Note 1)	Cause (See Note 2)	Date of Occurrence
Route 05	Queen of Cumberland	No	Traffic	05-Jun-2009

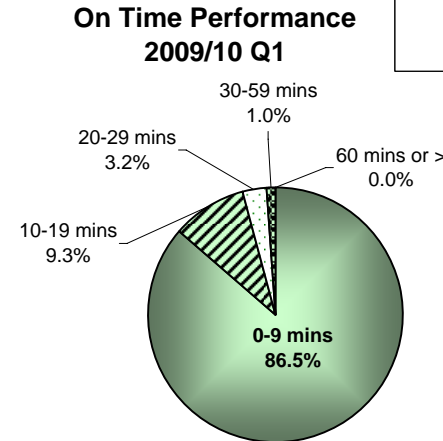
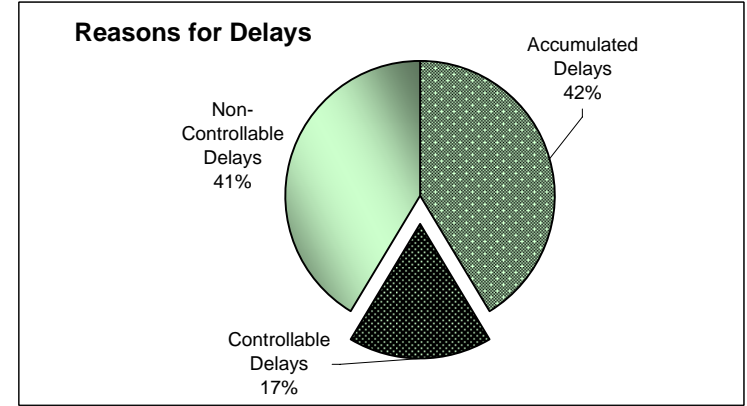
APPENDIX 4: Round Trip Service Delivery and On Time Performance 2009/10 Quarter Ended June 30, 2009

Route Group 1 - Major Routes

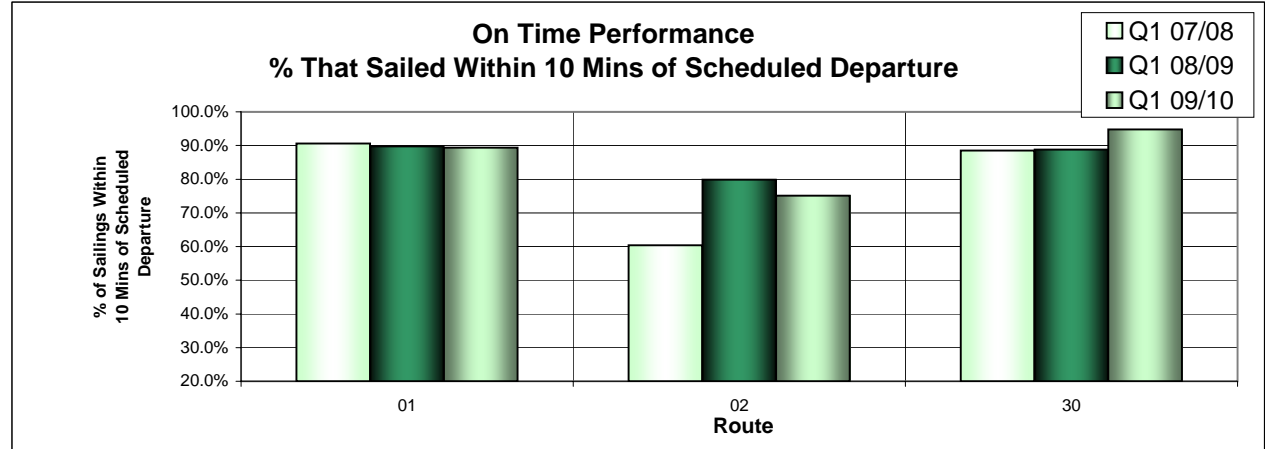


Routes	Major Route Description	Actual RTs	Minimum Required RTs	Variance (Actual to Minimum)	% Sailings Overloaded
Route 01	Swartz Bay-Tsawwassen	1,011.0	906.0	105.0	37.8%
Route 02	Horseshoe Bay-Departure Bay	760.0	643.0	117.0	33.4%
Route 30	Duke Point-Tsawwassen	700.0	611.0	89.0	15.0%
MAJOR Route Group Total		2,471.0	2,160.0	311.0	30.0%

Note 1:
For the Major Routes, the Estimated Quarterly Schedule reflects the annual core service level under the Coastal Ferry Services Contract, which is an aggregate total for the three routes (Routes 1,2 and 30)

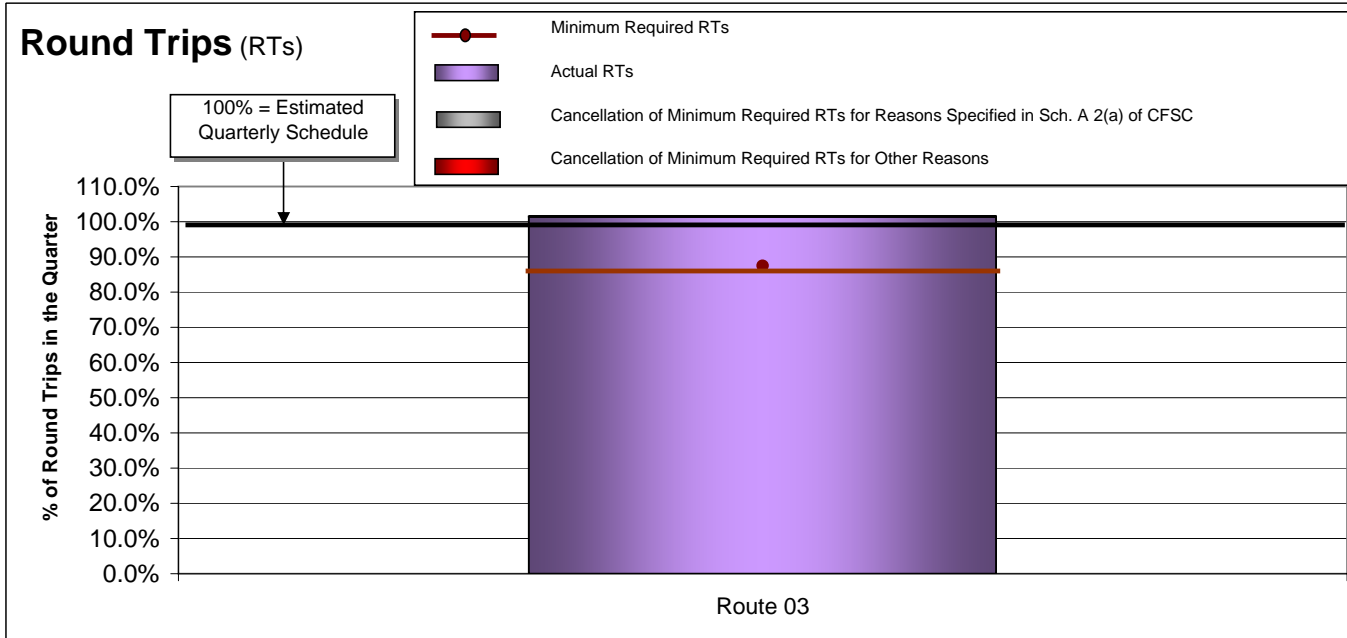


Controllable = Under the control of the company (loading procedure, fuelling, etc.)
Non-Controllable = Out of the control of the company (bad weather, medical, etc.)
Accumulated = Delays accumulated over the course of the day as a result of an earlier delay

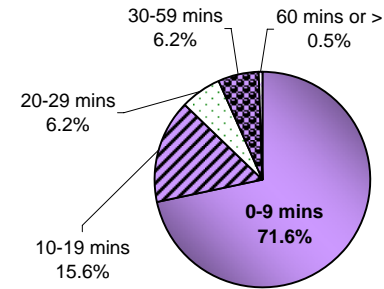


APPENDIX 4: Round Trip Service Delivery and On Time Performance 2009/10 Quarter Ended June 30, 2009

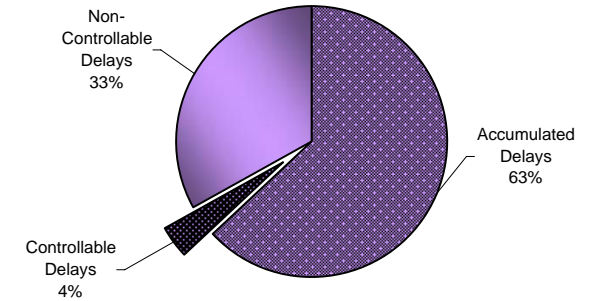
Route Group 2 - Route 3



On Time Performance 2009/10 Q1



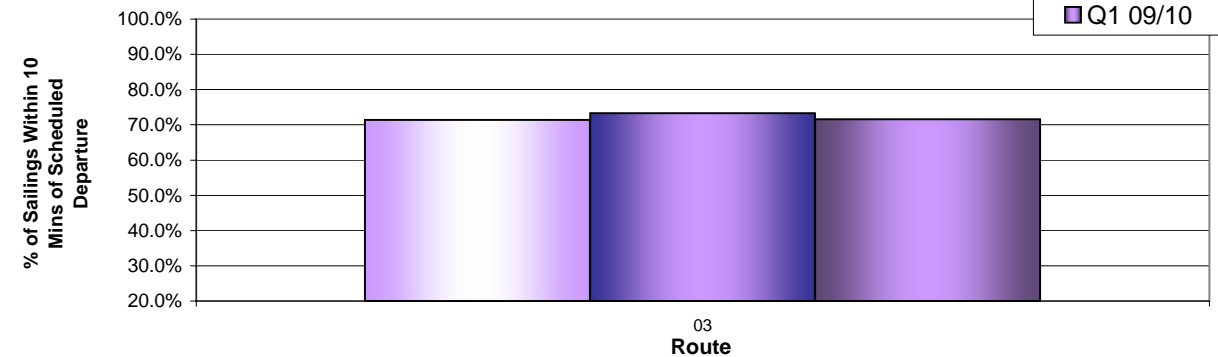
Reasons for Delays



Controllable = Under the control of the company (loading procedure, fuelling, etc.)
Non-Controllable = Out of the control of the company (bad weather, medical, etc.)
Accumulated = Delays accumulated over the course of the day as a result of an earlier delay

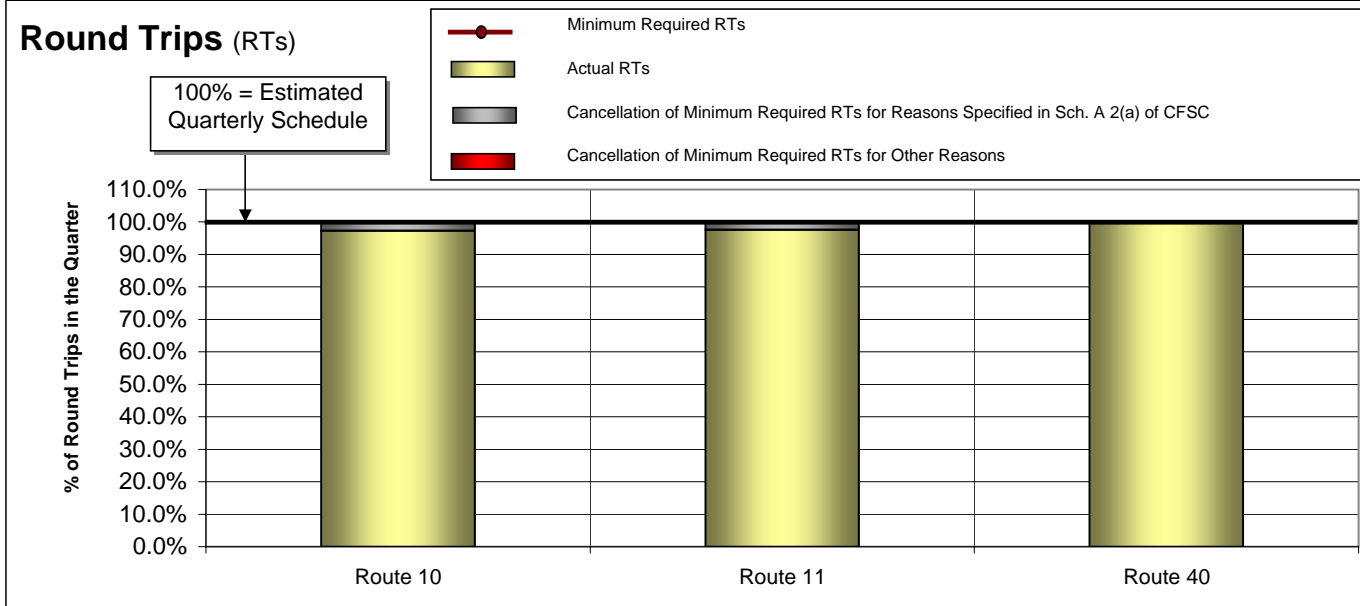
Routes	Route 3 Description	Actual RTs	Minimum Required RTs	Variance (Actual to Minimum)	% Sailings Overloaded
Route 03	Horseshoe Bay-Langdale	738.0	728.0	10.0	17.7%

On Time Performance % That Sailed Within 10 Mins of Scheduled Departure

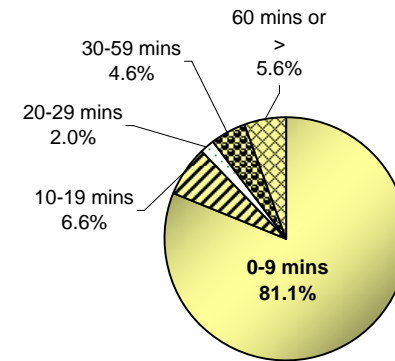


APPENDIX 4: Round Trip Service Delivery and On Time Performance 2009/10 Quarter Ended June 30, 2009

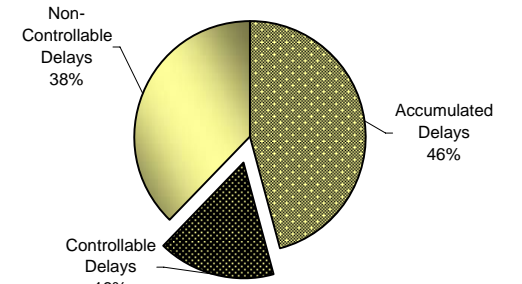
Route Group 3 - Northern Routes



On Time Performance 2009/10 Q1



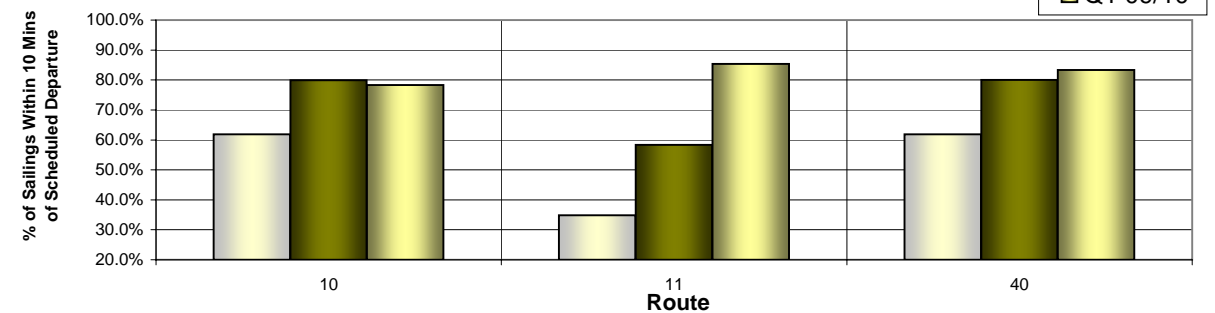
Reasons for Delays



Controllable = Under the control of the company (loading procedure, fuelling, etc.)
Non-Controllable = Out of the control of the company (bad weather, medical, etc.)
Accumulated = Delays accumulated over the course of the day as a result of an earlier delay

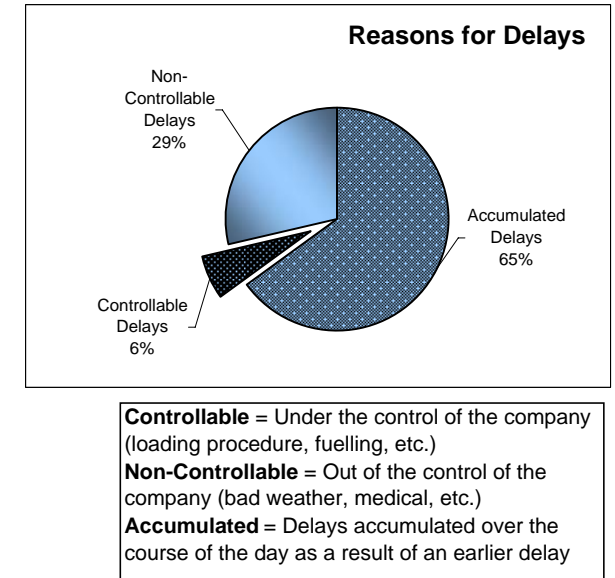
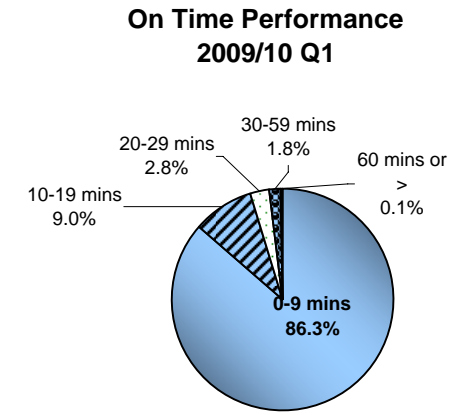
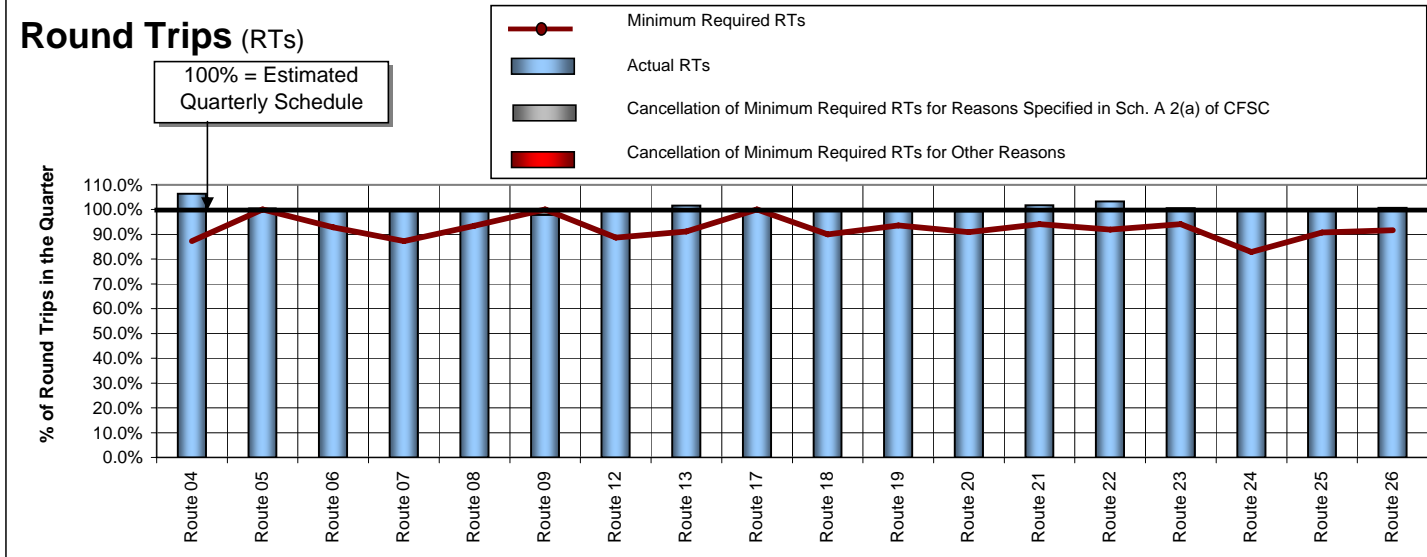
Routes	Northern Routes Description	Actual RTs	Minimum Required RTs	Variance (Actual to Minimum)	% Sailings Overloaded
Route 10	Port Hardy-Prince Rupert	35.5	36.5	-1.0	0.0%
Route 11	Skidegate-Prince Rupert	41.0	42.0	-1.0	3.7%
Route 40	Port Hardy - Mid Coast	9.5	9.5	0.0	0.0%
NORTHERN Route Group Total		86.0	88.0	-2.0	1.0%

On Time Performance % That Sailed Within 10 Mins of Scheduled Departure



APPENDIX 4: Round Trip Service Delivery and On Time Performance 2009/10 Quarter Ended June 30, 2009

Route Group 4 - Minor Routes



Routes	Minor Routes Description	Actual RTs	Minimum Required RTs	Variance (Actual to Minimum)	% Sailings Overloaded
Route 04	Swartz Bay-Fulford Harbour	761.0	715.0	46.0	21.3%
Route 05	Swartz Bay-Southern Gulf Islands	870.0	868.0	2.0	6.1%
Route 06	Crofton-Vesuvius Bay	1,258.0	1,261.0	-3.0	4.3%
Route 07	Earls Cove-Saltery Bay	713.0	715.0	-2.0	1.0%
Route 08	Horseshoe Bay-Bowen Island	1,388.5	1,389.5	-1.0	8.5%
Route 09 (1)	Tsawwassen-Long Harbour	178.0	182.0	-4.0	3.4%
Route 12	Mill Bay-Brentwood Bay	806.0	806.0	0.0	14.1%
Route 13	Langdale - Keats - Gambier Island	1,046.0	1,030.0	16.0	pass only
Route 17	Little River (Comox)-Powell River	364.0	364.0	0.0	4.8%
Route 18	Westview (Powell River)-Blubber Bay (Texada)	905.0	910.0	-5.0	1.1%
Route 19	Nanaimo Harbour-Descanso Bay (Gabriola)	1,427.0	1,430.0	-3.0	5.6%
Route 20 (2)	Chemainus-Thetis-Kuper	994.0	1,001.0	-7.0	1.9%
Route 21	Buckley Bay-Denman West	1,560.0	1,534.0	26.0	4.2%
Route 22	Gravelley Bay (Denman East)-Shingle Spit (Hornby)	1,155.0	1,118.0	37.0	4.4%
Route 23	Campbell River-Quathiaski Cove (Quadra)	1,568.0	1,560.0	8.0	8.5%
Route 24	Heriot Bay (Quadra)-Whaletown (Cortes)	534.0	533.0	1.0	14.0%
Route 25	Port McNeill-Sointula-Alert Bay	990.0	988.0	2.0	4.9%
Route 26	Skidegate-Alliford Bay	1,100.0	1,092.0	8.0	1.8%
MINOR Route Group Total		17,617.5	17,496.5	121.0	6.0%

NOTES:

- Route 9 - sailings cancelled on 2 days for a regulatory inspection to renew the Inspection Certificate. Cancellation pre-approval received from the Ministry of Transportation and Infrastructure.
- Route 20 - #1 ME & RAD stopped because of marine matter jammed in propeller. Repairs took 4 days but # of sailings fell below daily minimum on only 2 of the 4 days.

